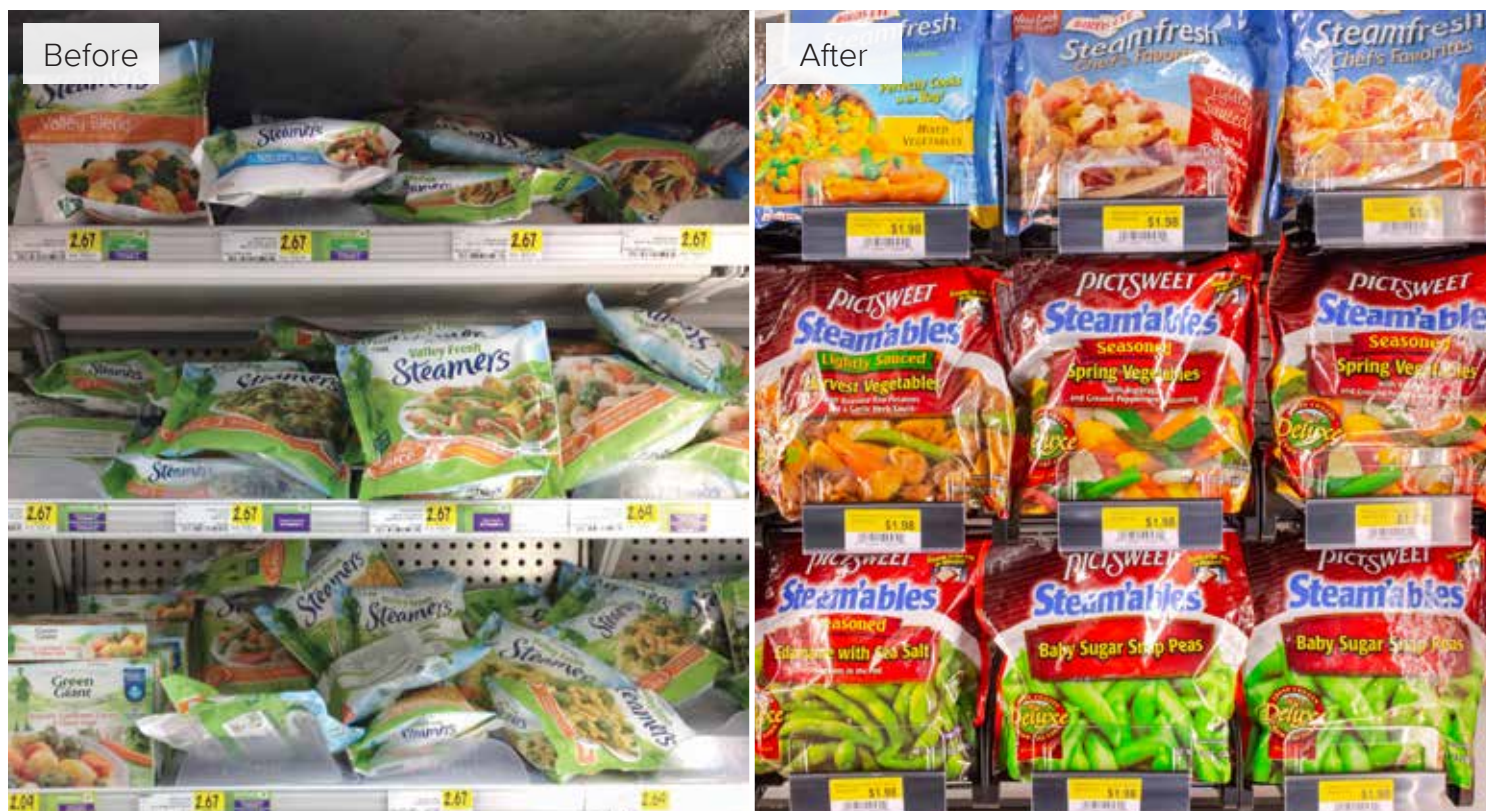


# [NEXT] 2.0

Most durable tray in the market



**siffron**™  
always on



PATENTED

## Enhance presentation to increase sales

The NEXT™ Tray Merchandising System allows retailers to increase merchandising space and improve product visibility. Each item remains faced and visible to the customer for easy product selection. By incorporating the NEXT™ System into a planogram, retailers can eliminate expensive shelving and put more product in its place.

NEXT™ 2.0 allows retailers to further streamline appearance and simplify labor while saving money. The modified design includes open-weave construction to reduce the overall weight and cost, and the pusher paddle extension allows for easy and complete product stocking. Additionally, customers benefit from a more organized and cohesive layout featuring enhanced product depth and merchandising which, in turn, increases sales.

## Product features

NEXT 2.0 Trays allow for product to be loaded all the way to the back of the tray.

- ◆ Honeycomb airflow
- ◆ Most durable tray in the industry
- ◆ Patented
- ◆ NSF certified



Redesigned mounting brackets allow for an increased number of packages per tray.



## [NEXT] 2.0 The next generation for organized and accessible retail display

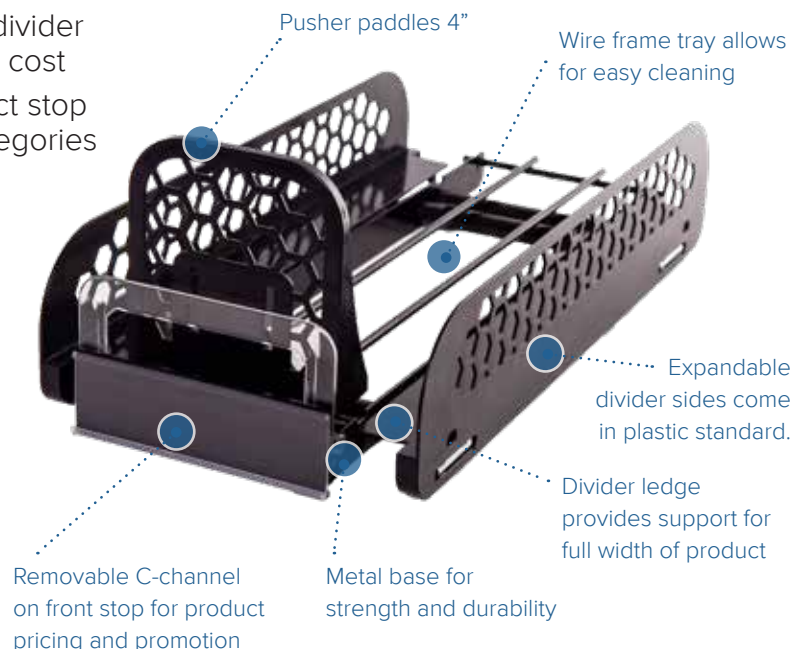


\*Find more information on NEXT 2.0 with baffle on page 5

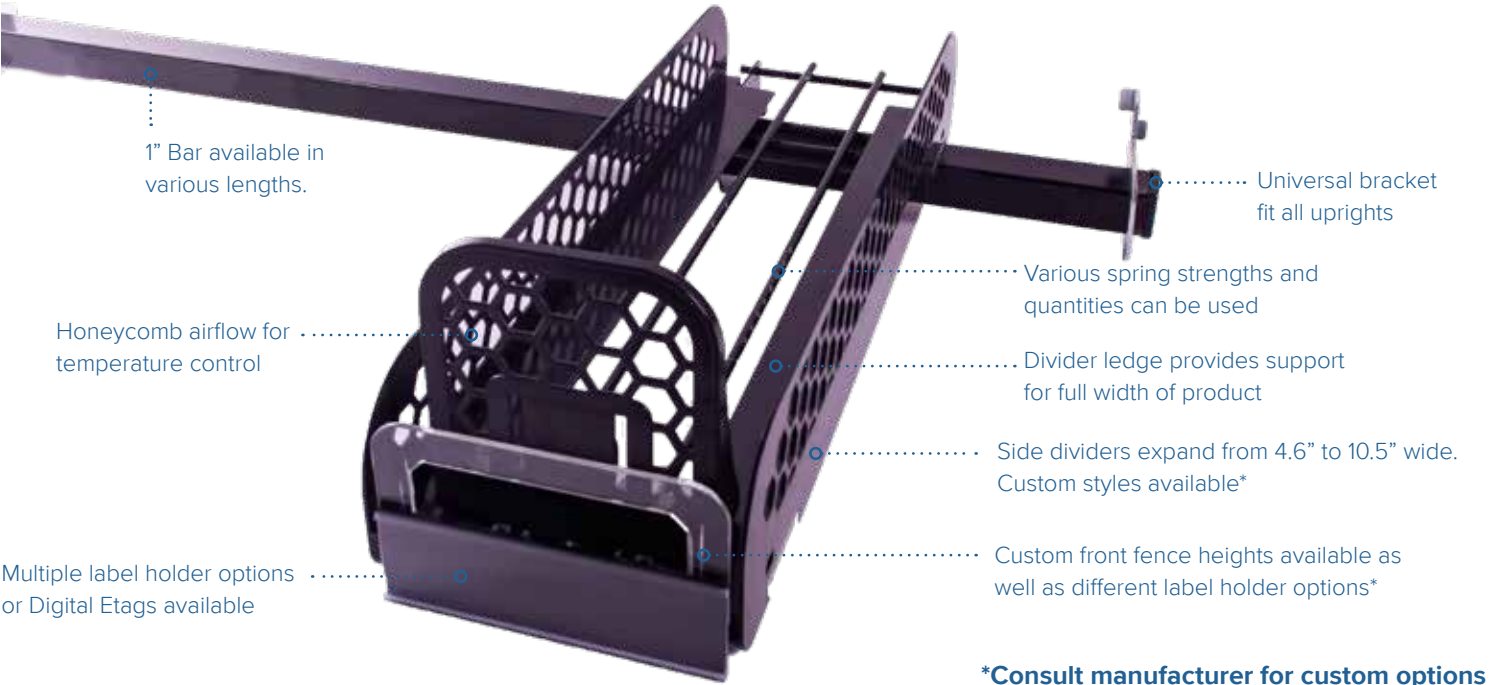
### Streamline, simplify and save!

With the NEXT™ 2.0 Merchandising System, retailers save valuable retail space and can stock additional products per tray. NEXT™ 2.0 offers the following features:

- ◆ Attractive, open-weave construction of plastic divider and pusher paddle reduces overall weight and cost
- ◆ Uniform size of pusher paddle and front product stop maintain consistency across packages and categories
- ◆ Pusher paddles extend to the back of tray to hold more merchandise
- ◆ Divider ledge secures wide boxed and bagged products
- ◆ Durable wire frame expands from 4.6" to 10.5" to accommodate a wide variety of package shapes and sizes
- ◆ Two tray mounting styles available: Bar mount and shelf rail
- ◆ Trays fit on Fresh-Fit® Thin Profile Shelving System mount bar to organize and face salads and other bagged produce



# [NEXT] 2.0 Bar Version - Most durable tray in the market



**\*Consult manufacturer for custom options**

## Expandable sides

Divider sides are expandable, to hold products between 4.6" to 10.5" wide. Divider ledge supports full width of product.



## Bar mount design

Design of tray mount allows trays to span over bars, creating a continuous flow of merchandise.



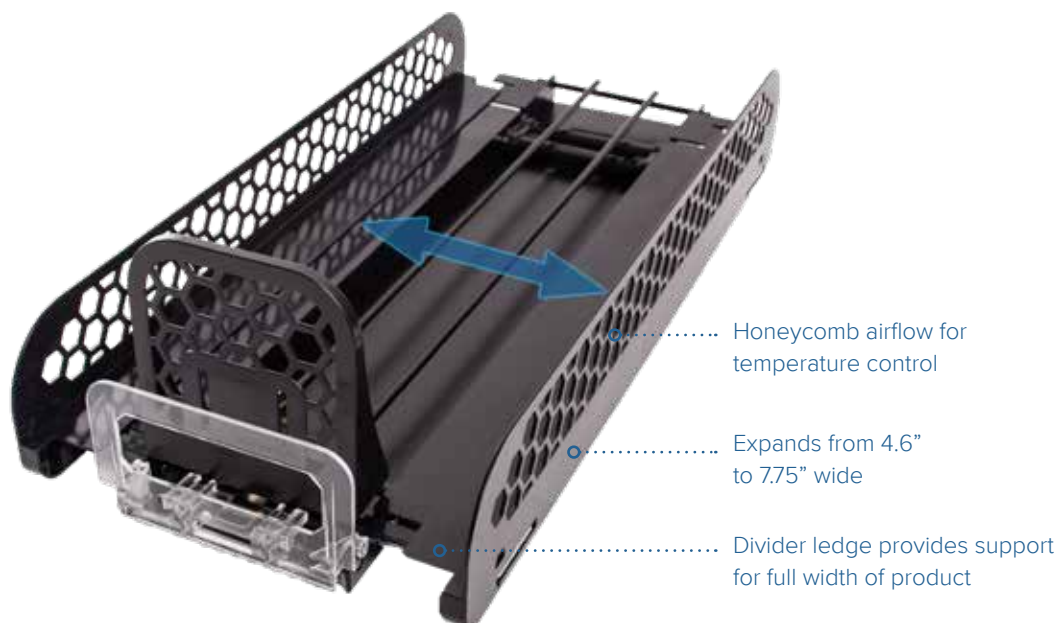
## Specifications

- ◆ Standard 4.6" wide tray frame
- ◆ Tray is available in 15", 17", 19" and 21" depths
- ◆ Bar Tray expands from 4.6" to 10.5" wide with dividers
- ◆ Bar Tray with Baffles expands from 4.6" to 7.75" wide with dividers
- ◆ Various spring tensions available
- ◆ Standard color is black - custom colors available
- ◆ Custom depths and features also available

Part Number	Description	Pack
N2B-15-141-K	NEXT 2.0 15" Bar Tray	12
N2B-17-141-K	NEXT 2.0 17" Bar Tray	12
N2B-19-141-K	NEXT 2.0 19" Bar Tray	12
N2B-21-141-K	NEXT 2.0 21" Bar Tray	12
N2B-15-141-B-K	NEXT 2.0 15" Bar Tray w/ Baffle	12
N2B-17-141-B-K	NEXT 2.0 17" Bar Tray w/ Baffle	12
N2B-19-141-B-K	NEXT 2.0 19" Bar Tray w/ Baffle	12
N2B-21-141-B-K	NEXT 2.0 21" Bar Tray w/ Baffle	12



## [NEXT] 2.0 Bar Version (Options) - Most durable tray in the market



### Optional integrated air baffle - Keep bagged produce and deli merchandise from spoiling

The Next™ 2.0 is also available with baffles to ensure temperature is maintained at the optimal level and product is kept fresh from the back of the cooler to the front. Next™ 2.0 baffles come installed into the tray already – requiring no additional assembly. Note: Next™ 2.0 with Integrated Baffles can expand up to 7.75”.

Under refrigeration testing, the Next™ 2.0 has proven it supports the critical air curtain required for optimal preservation of frozen or chilled merchandise, allowing the unit to hold proper temperatures. \*

\*Unit must be properly installed and merchandised

### LED lighting - Capture attention

Looking for a way to draw customer attention to your retail space? Enhance your merchandising space using the NEXT™ 2.0 LED Light Bar. The NEXT™ LED Light Bar mounts on the bar and rests under the trays to illuminate the product below. Perfect for promoting impulse purchase items such as candy.



[NEXT]. 2.0 Bar Version (Options) - Most durable tray in the market



Pull-out Tray - Ensure first-in, first-out rotation

Make product loading easy with the new Next™ 2.0 Pull-out Tray option. Designed with the same advantages as the Next™ 2.0 Tray, the Next™ 2.0 Pull-out Tray extends 2/3 of the total tray length (the longest extension tray in the marketplace) to make it easier to load product into cooler sections – perfect for insuring first in, first out merchandising. A locking paddle makes loading and re-loading product a snap, paddle automatically releases when tray is closed.



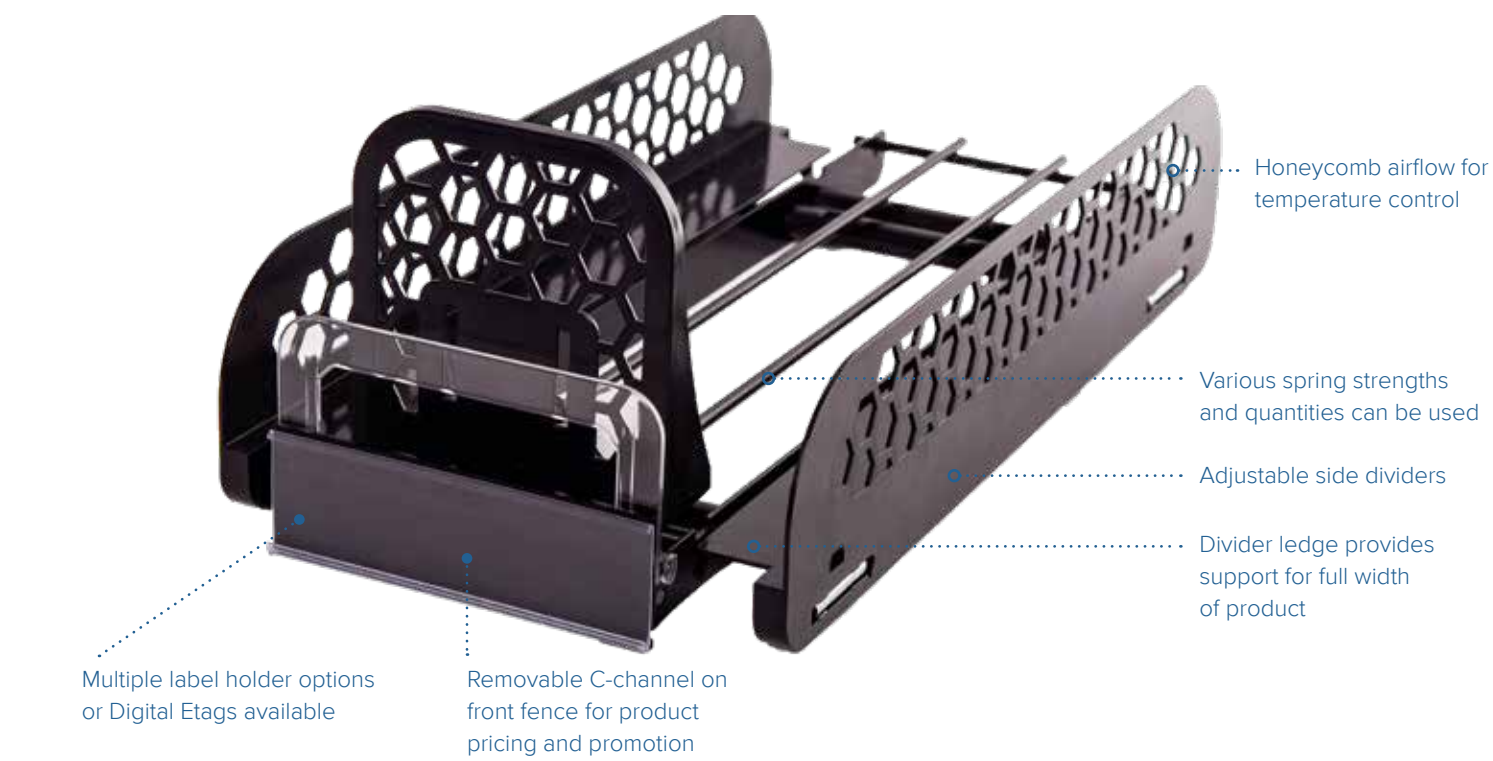
Specifications

- ◆ Standard 4.6” wide frame
- ◆ Tray with Baffles is available in 15”, 17”, 19”, and 21” depths and expands from 4.6” to 7.75” wide with dividers
- ◆ Standard color is black

Part Number	Description	Pack
N2E-15-142-B-K	NEXT 2.0 15” Pull-out Tray with Baffles	12
N2E-17-142-B-K	NEXT 2.0 17” Pull-out Tray with Baffles	12
N2E-19-142-B-K	NEXT 2.0 19” Pull-out Tray with Baffles	12
N2E-21-142-B-K	NEXT 2.0 21” Pull-out Tray with Baffles	12

[NEXT]. 2.0

Shelf Version - Most durable tray in the market



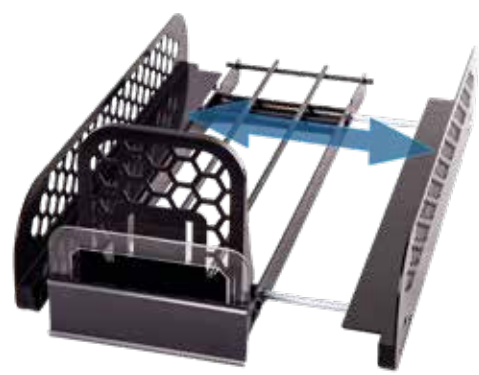
### Front rail mounting

Shelf rail provides easy tray adjustment of installed Next™ trays. No un-install necessary - just slide into place. Mount in tray/box/tray orientations for special product promotions.



### Expandable sides

Divider sides are expandable to hold products between 4.6" to 10.5" wide.



### Specifications

- ◆ Standard 4.6" wide frame
- ◆ Tray is available in 13", 15", 17", 19", and 21" depths and expands from 4.6" to 10.5" wide with dividers
- ◆ Front Rail available in 30", 36" and 48" L
- ◆ Various spring tensions available
- ◆ Standard color is black
- ◆ For standard gondola shelf perforations use Universal Fastener 8509317101 (sold separately).
- ◆ For wire cooler shelving use Fastener for Wire 4166734140 (sold separately).

Part Number	Description	Pack
N2S-13-141-K	NEXT 2.0 13" Shelf Tray	12
N2S-15-141-K	NEXT 2.0 15" Shelf Tray	12
N2S-17-141-K	NEXT 2.0 17" Shelf Tray	12
N2S-19-141-K	NEXT 2.0 19" Shelf Tray	12
N2S-21-141-K	NEXT 2.0 21" Shelf Tray	12





8181 Darrow Road  
Twinsburg, OH 44087

# [NEXT]<sup>®</sup> 2.0

---

## Increase sales

Increase sales 10-15% through enhanced product appearance. Average ROI of eight months.

---

## Increase merchandising space

Increase the number of facings in a section by as much as 25% by removing shelves and optimizing planograms.

---

## Reduce labor costs

Upon product removal, each product is faced with spring-loaded action.

Find more information at [www.siffron.com](http://www.siffron.com)

## Ordering is easy!

---

Phone **800.422.2547**  
Fax **800.422.2502**  
Web **[www.siffron.com](http://www.siffron.com)**

call toll free in North America  
fax us your purchase order  
buy and find resources online